


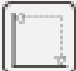
VARSOVIA


30x90


CARACTERÍSTICAS TÉCNICAS

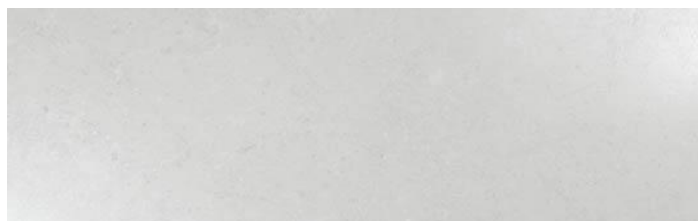
TECHNICAL CHARACTERISTICS

 Revestimento

 Rectificado

 Acetinado

 m² caixa: 1.32



Varsovia Blanco



Varsovia Beige



Decor Varsovia Blanco



Decor Varsovia Beige